
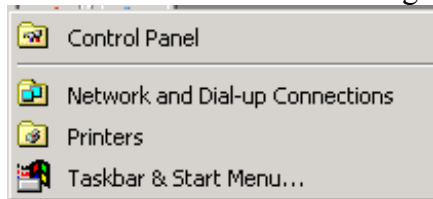


Instructions for Adjusting your Computer's Screen Resolution

- 1) Click the  button in the lower left corner of your screen.
- 2) A menu similar to the following will be displayed:



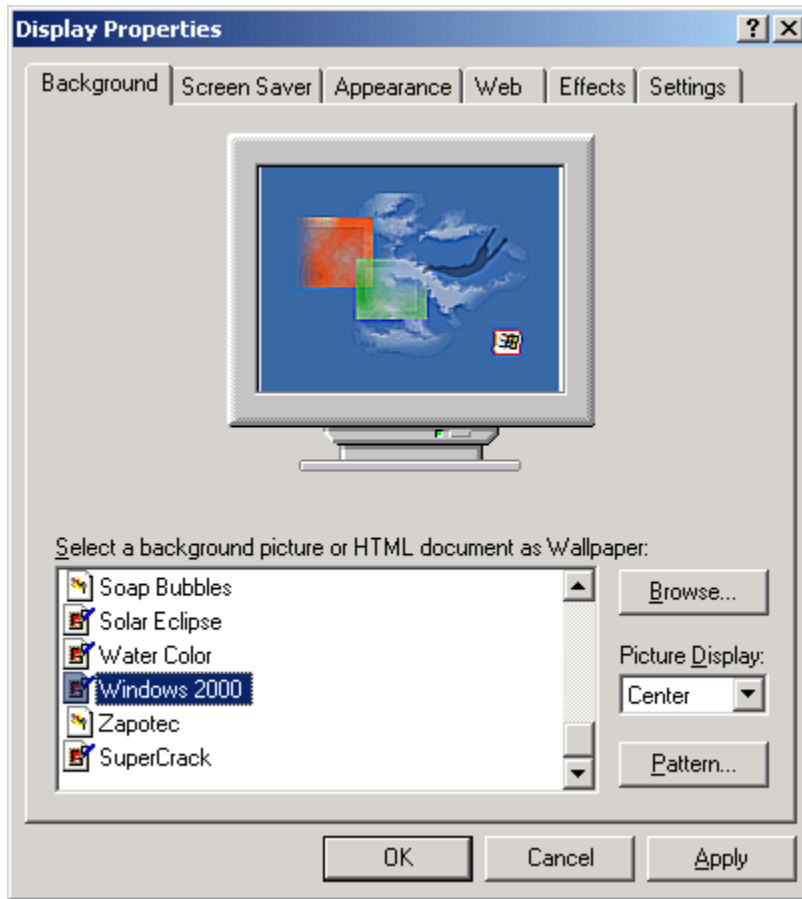
- 3) Click **Settings**.
- 4) A menu similar to the following will be displayed:



- 5) Click **Control Panel**.

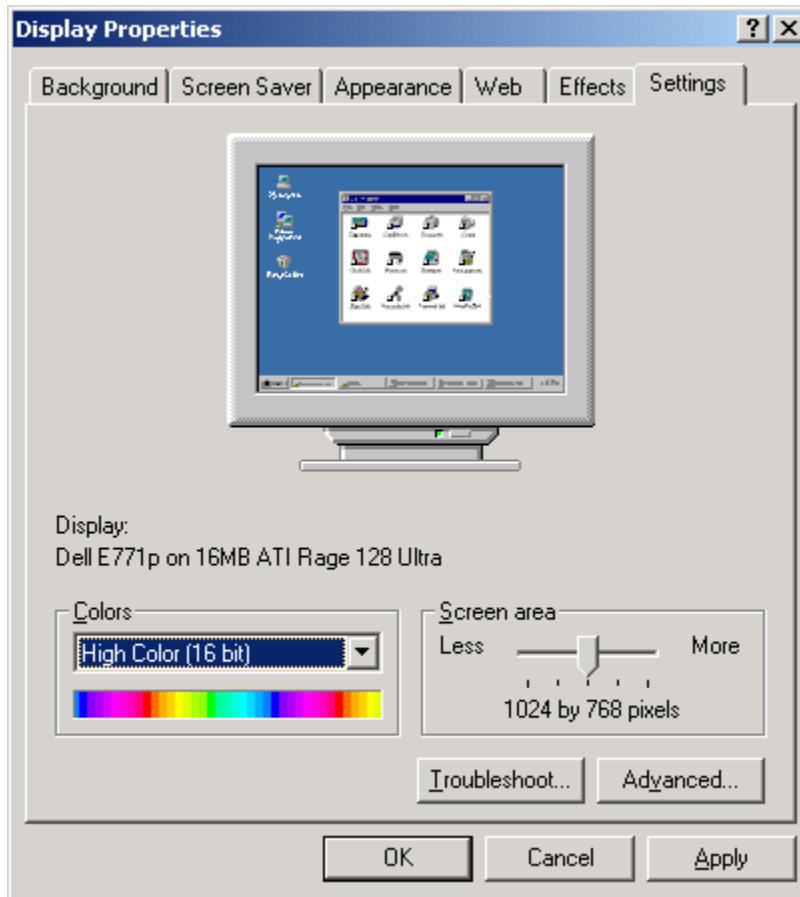
- 6) One of the options should be  Display or  Display, double click on it.

7) You will be shown a screen similar to this:



8) Click on the **Settings** tab.

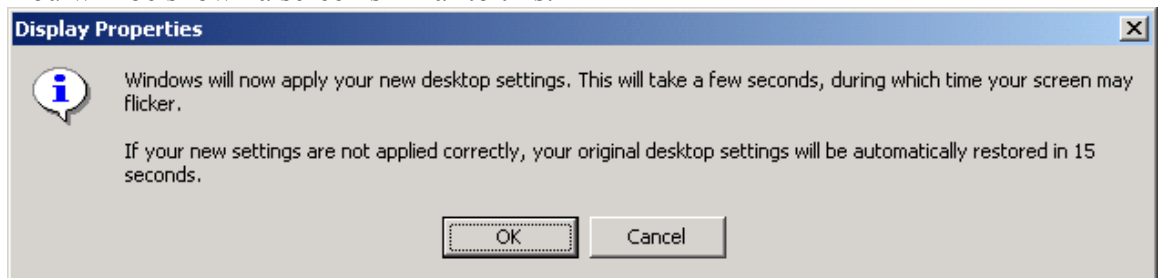
9) You will be shown a screen similar to this:



10) In the **Screen Area** frame, adjust the slider so that it says at least **800 by 600 pixels**.

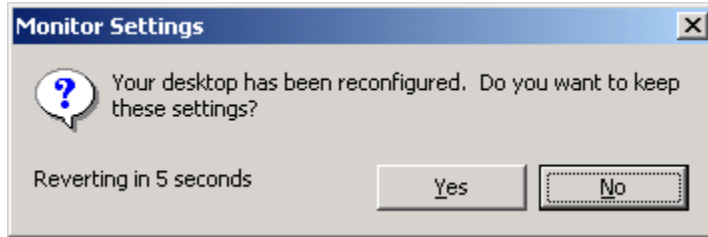
11) Click **OK**.

12) You will be shown a screen similar to this:



13) Click **OK**.

- 14) Your screen will go blank for a few seconds, and then will reappear with the new resolution. You will be shown a screen similar to this:



- 15) Click **Yes**.
- 16) You may now run PinPointer.